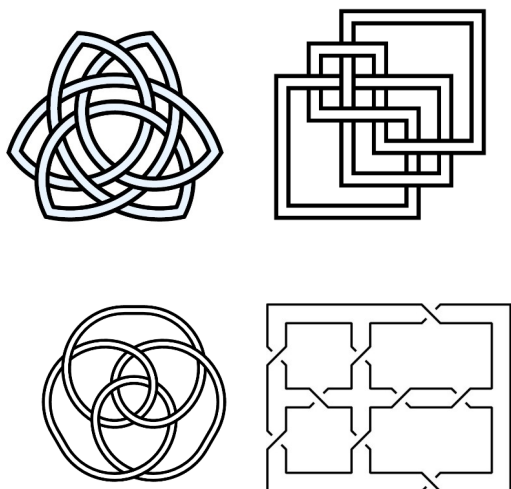


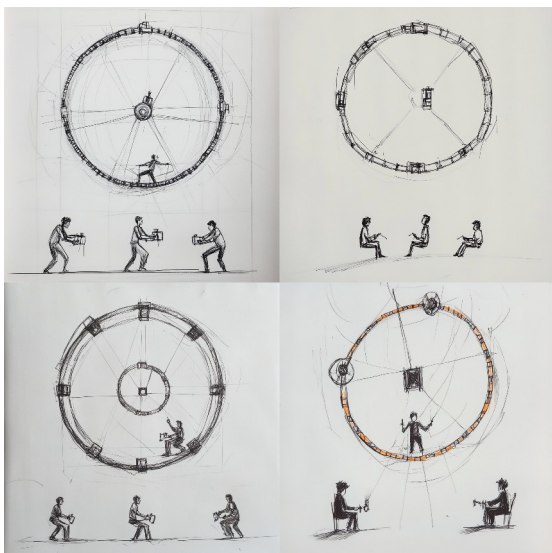
OBLIKOVALNIK  
 design studio  
<http://www.oblikovalnik.com/>  
 Anže Kreč  
[anzekrec@gmail.com](mailto:anzekrec@gmail.com)  
 +38641348186

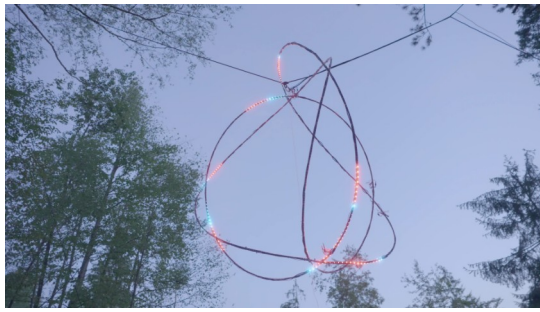
# KN OT

THE KNOT is an interactive, self-sustaining light installation that seamlessly integrates the analog and digital worlds.



This project serves as a representation of the continuous and often mindless energy we as individuals and as a society invest into the systems that shape our lives. Through its innovative design, THE KNOT embodies the concept of energy loops, cycles of input and output, and the human compulsion to fuel these systems.





At the heart of the installation is the idea that all of us, either as individuals or as a collective society, are caught in an ongoing loop. We tirelessly crank the metaphorical handles of the systems that govern our daily lives, feeding them with our personal energy.

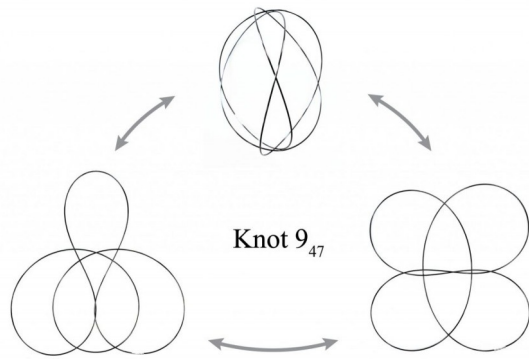


THE KNOT visually and symbolically captures this continuous cycle, urging observers to reflect on their place within it. Whether it be social, economic, or personal systems, the installation invites users to question the structures we endlessly sustain.



The theme plays on the interdependence between humans and their systems — the more energy we exert, the stronger the loops become.

## Design and Structure



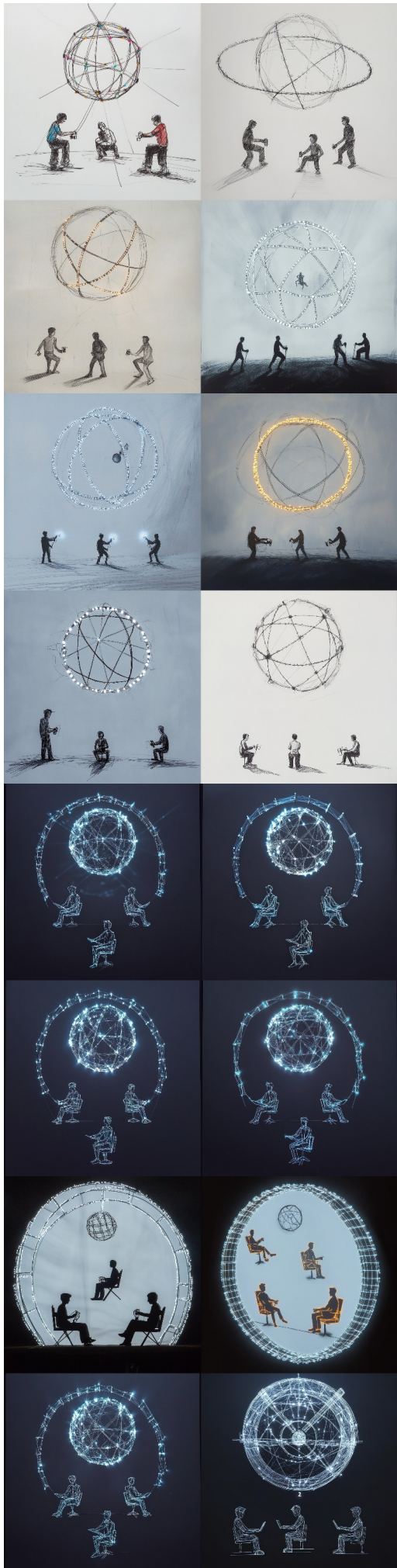
### Atlas Knot 9-47

The core of the installation is the Atlas Knot 9-47, a large, symbolic knot that acts as both the physical and conceptual center of installation. The knot represents complexity, intertwining paths, and the unbreakable ties of the systems we perpetuate.



### GR-2 Hand Crank Generators

Surrounding the Atlas Knot are three GR-2 hand crank generators, which participants must operate to power the installation. These generators represent the analog aspect of the installation — a physical and tactile interaction where users generate energy to fuel the system.



## Interaction and Experience

The installation thrives on human interaction. By manually cranking the generators, users feed energy into the system, which is then transformed into light, symbolizing the endless energy loops that power the systems in our lives. The light produced is both a physical manifestation of the participants' efforts and a metaphor for the output of the energy we invest in our systems. As the participants continue cranking, the light intensifies, representing how society grows and thrives on the efforts of individuals.

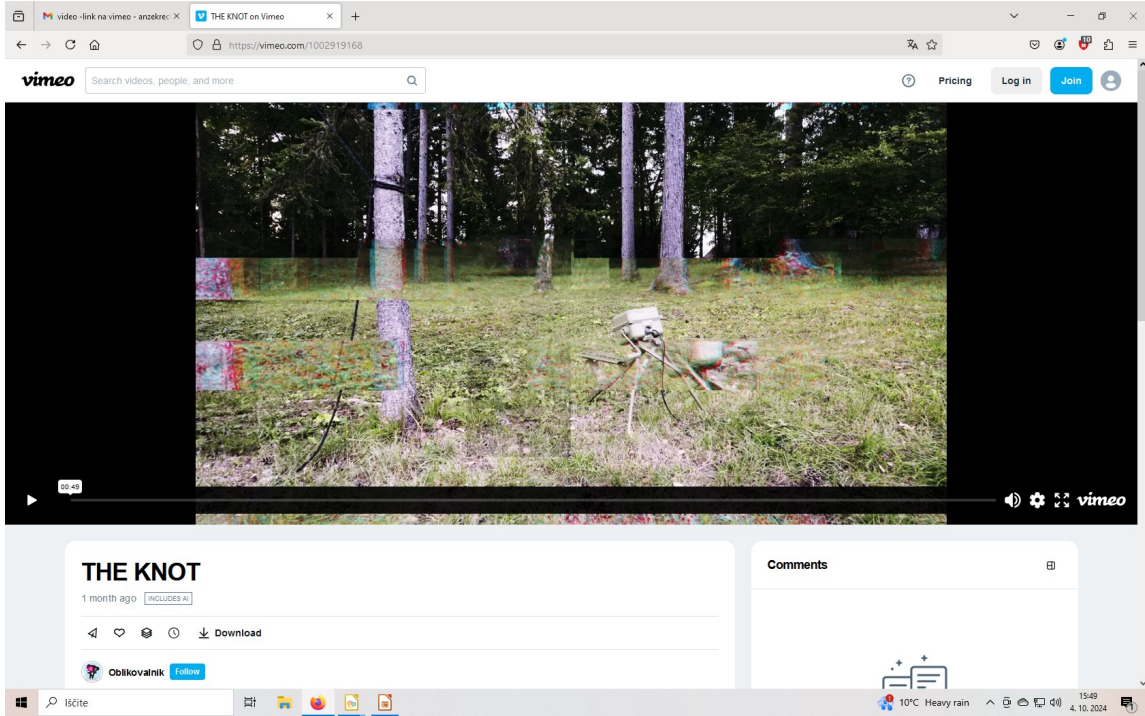
The installation forces participants to reflect on the mindlessness with which we often contribute to these cycles, raising questions about autonomy, purpose, and societal roles.

## Conclusion

THE KNOT challenges the audience to recognize the loops they are trapped in and consider their relationship to the systems they support. Through its interactive design and the blending of analog and digital elements, it offers a poignant reflection on the often unexamined cycles of energy and effort in our lives.

By participating in the cranking, each individual becomes part of the loop, reinforcing the installation's central message — that we are all contributors to the systems we live within, whether we recognize it or not.

<https://vimeo.com/manage/videos/1002919168>



Weight: 30 Kg

Transport: 60x60x80(cm)

Electricity: None. One generator produces 60W of power